


A modern, single-story garden room with a dark grey frame and vertical wood cladding. It features a large set of glass doors that reflect the surrounding greenery. The room is situated on a well-maintained green lawn. In the foreground, there is a large, colorful sculpture of a bird or dragon with wings spread, set against a backdrop of lush green trees and a clear blue sky with light clouds.

INFRAME
GARDEN ROOMS

Golf Simulator Garden Rooms

More than “just” a garden room,
its an extension of your home



Your Garden Your Rules

Elevate your game with your own personal Golf Simulator Room right in your back garden.

Picture this: stepping into your garden, not just to unwind, but to play a round of golf whenever you want—regardless of rain, shine, day, or night.

No more long drives to the course or concerns about the weather; your ideal golfing experience is right there, just outside your door.

Welcome to the golf simulator garden room—a game-changer in home entertainment and practice for golf enthusiasts.

A simple 4 step process

01

PROJECT CONSULTATION, COST SCHEDULE AND YOUR DESIGN

Share your preferred frame and model selection with our customer service team and they'll send you a cost schedule based on your requirements.

02

DESIGN FEASIBILITY, REVISIONS & COMMENTS

Your custom designs are created by the InFrame design team for your review and approval, with drawing revisions included as standard for those all-important tweaks.

03

SITE SURVEY, DESIGN SIGN OFF AND COST SCHEDULE ACCEPTED

Once you're completely satisfied with your design, we will review your customisation, and schedule a visit to survey your space.

04

PLACE YOUR ORDER, WATCH THE BUILD AND THEN ENJOY

Once we have received your deposit, your steel will then be put into production. Installation will then begin in approximately 8 weeks and soon be ready for you to enjoy!

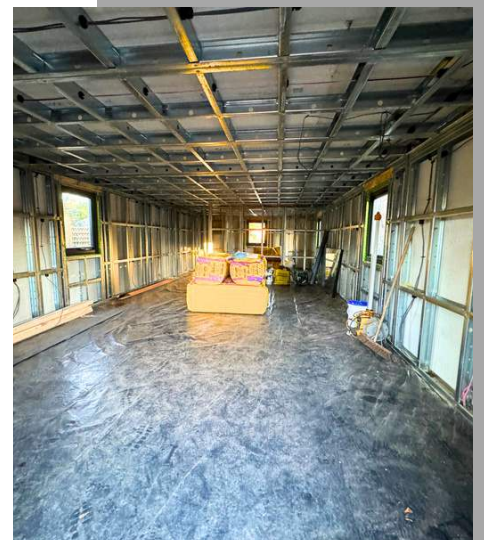


Steel Core Garden Rooms

Whatever you are using your garden room for, you want to make sure that your space is built to last. This is why we offer a 25 year guarantee on our steel frames.

- Strong and durable
- No rot, no movement, no deterioration
- Design flexibility, allowing hanging or mounted gym equipment
- Precision manufacturing
- Lasts a lifetime

Steel Framed Garden Room, Why Would you do it any other way?



THE SUPERIOR WAY TO BUILD YOUR DREAM SPACE

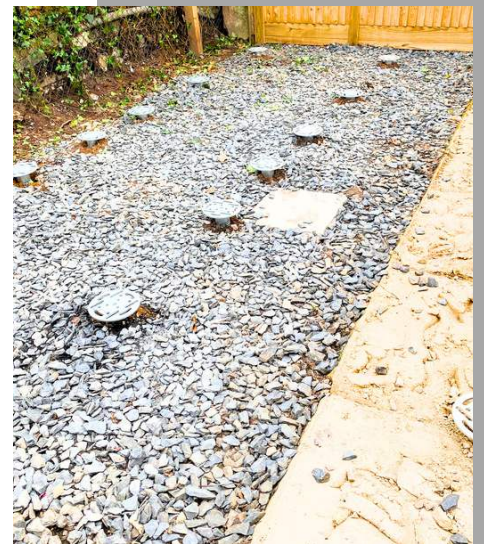


Screw Pile Foundations

No need for digging, or intrusive excavation.
Screw Piles are the quickest and strongest foundation for your garden room.

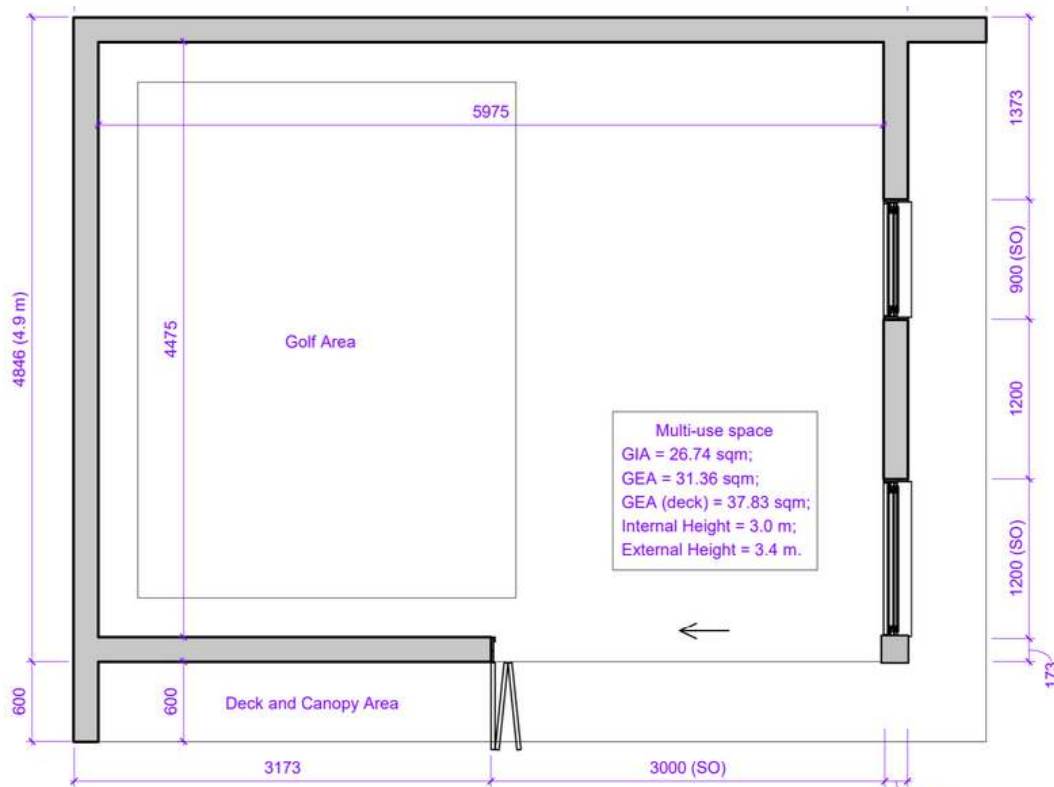
Key benefits

- No weather constraints
- No need for extensive groundworks
- No skips
- No rot, no movement, no deterioration
- Kind to roots and surrounding vegetation
- No concrete
- Precision Installation
- Ready for immediate use
- Environmentally sustainable



Installed in Hours Not Days

PLANNING



Planning Permission

For a full swing without any restrictions, you'll need a ceiling height of at least 3 meters. This ensures enough space for comfortable play and keeps your simulator setup working smoothly!

For any garden room over 2.5m, you'll need planning permission. But no worries—we handle everything in-house! Our planning experts will take care of the design, submit the application, and manage the process for you.

If, however you have a large garden space, you could install a dual pitched garden building up to 4m high without the need for planning.



For the whole family

Enjoy a round of golf from the comfort of their own garden—rain or shine, day or night! Perfect for practice, family fun, or entertaining guests.

Start planning your golf simulator garden room today and take your game to the next level.

Customise the space and make it yours.

Window and door options
Canopy and composite deck
(300 and 600mm options)
Cladding options
Bespoke millboard enhanced gran composite deck options (entertaining space, indoor out...)

Book your
on site
Consultation





Fore



A golf simulator garden room is more than just a luxury—it's an investment in your passion for the game



If you're serious about golf and have the space and budget, this could be the ultimate addition to your home, offering endless hours of enjoyment and a tangible boost to your property's value.





The Aspire Range

Whether you've got a big dream or just the flicker of an idea, we are here to take your grand design and bring it to life.

An Aspire garden room is more than just a space; it's a statement of individuality and sophistication.

Designed for those who are looking for both style and functionality, it offers a retreat that blends luxury with the beauty of the outdoors. Whether for relaxation, games or entertainment, an Aspire garden room elevates your lifestyle with a unique, custom-built sanctuary tailored to your needs.

Designed for those who appreciate the extraordinary, our Aspire bespoke garden rooms are more than just ordinary, offering a blend of elegance, functionality, and tailored beauty. Discover the unparalleled craftsmanship that transforms your garden into a bespoke space, reflecting your individual taste and enhancing your lifestyle.

-Your home is unique, Shouldn't your garden room be too?

FROM DESIGN TO COMPLETION



With 20 years of experience, our pioneering InFrame in-house designers are ready to take your rough plans and turn them into

Something extraordinary.

Something unique.

Something just for you.

We take our clients' vision and transform it into their dream space, ensuring every detail is meticulously catered for.

A bespoke garden room is blank canvases awaiting personalisation.

Every design decision, from exterior features to interior elements, is an opportunity to tailor the canvas to the owner's taste.

you bring the vision, we'll do the work

YOUR DREAM
SPACE -
REALISED





Why stop at just a golf simulator? You can easily add a kitchenette or a small toilet room to make your garden room even more convenient and versatile! Perfect for those long practice sessions or when entertaining guests.

How about adding a bar with your favourite drinks? 🍷🍹

Perfect for relaxing after a round or hosting friends and family! Your garden room can be the ultimate entertainment space—golf, drinks, and good times all in one place.



-Now you can merge functionality with beautiful aesthetics.

INFRAME

GARDEN ROOMS

Contact Details

 0204 5512577

 connect@inframegardenrooms

 www.inframegardenrooms.co.uk

